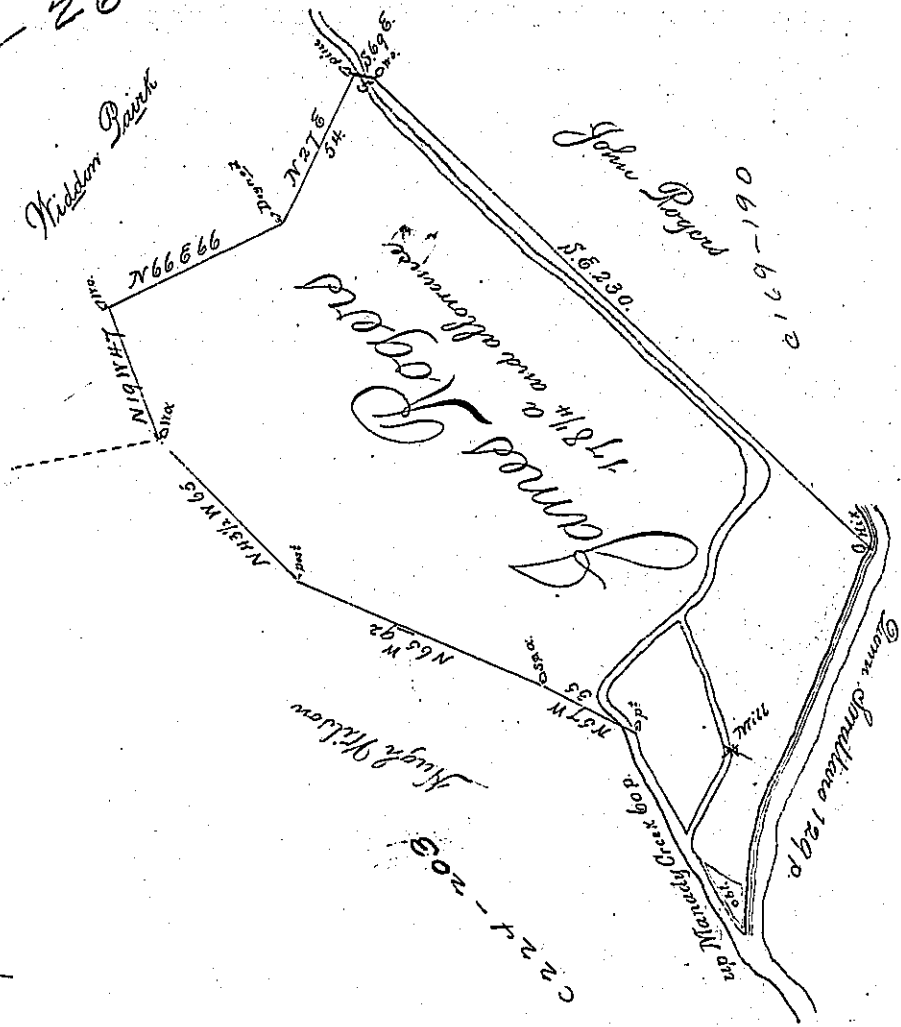


C146 - 261



Surveyed to James Rodgers on the 18<sup>th</sup> January 1766 the above described Tract of One Hundred Seventy Eight Acres & a Quarter & the Usual allowance of highway situate in Hanover Town Lancaster County. By Application of the 30<sup>th</sup> of October 1765. N<sup>o</sup> 1185.

p Bartrem Galbraith D.S.

To John Luxens Esq<sup>t</sup>  
Surveyor General

IN TESTIMONY that the above is a copy of the original remaining on file in the Department of Internal Affairs of Pennsylvania, made conformably to an Act of Assembly approved the 16th day of February, 1833, I have hereunto set my Hand and caused the Seal of said Department to be affixed at Harrisburg, this

1<sup>st</sup> day of March 1898.

James W. Latta  
Secretary of Internal Affairs.